



Note: Refer To Page 4 For "Capacity Deductions For Auxiliary Load Handling Equipment".  $\Delta^\circ$  Loaded Boom Angle In Degrees. ( ) Reference Radius For Minimum Boom Angle Capacities (Shown in Parenthesis) Are In Feet.

Rated Lifting Capacities In Pounds Fully Extended Outriggers. See Set Up Note 2.

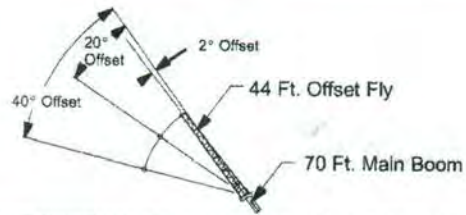
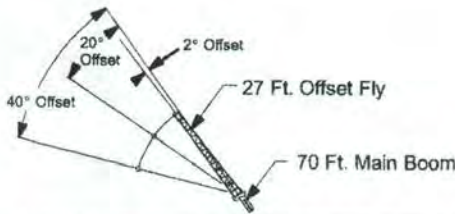


Load Radius (Ft.)	27 Ft.		40 Ft.		50 Ft.	
	$\Delta^\circ$	Load	$\Delta^\circ$	Load	$\Delta^\circ$	Load
9	60.5	44,000	71.5	41,000	75.5	38,800
10	58.0	40,000	69.5	38,800	74.5	36,800
12	52.5	32,500	66.5	32,800	72.0	32,900
15	43.5	25,200	61.5	25,500	68.0	25,700
20	19.5	17,800	52.5	18,000	61.5	18,200
25			42.0	14,000	54.5	14,100
30			28.5	11,000	47.0	11,300
35					37.5	8,700
40					25.5	6,800
Min. Bm. Ang./Cap.	0 (20.8)	16,800	0 (33.7)	9,100	0 (43.7)	5,800


Rated Lifting Capacities In Pounds Fully Extended Outriggers. See Set Up Note 2.



Load Radius (Ft.)	60 Ft.		70 Ft.	
	$\Delta^\circ$	360°	$\Delta^\circ$	360°
12	76.0	30,500		
15	72.5	25,700	76.0	22,000
20	67.5	18,300	71.5	17,700
25	62.0	14,200	67.0	14,300
30	56.0	11,400	62.0	11,600
35	49.5	8,800	57.5	8,900
40	42.5	6,900	52.0	7,000
45	34.5	5,600	46.0	5,700
50	23.5	4,500	39.5	4,600
55			32.0	3,800
60			22.0	3,100
Min. Bm. Ang./Cap.	0 (53.7)	3,900	0 (63.8)	2,700




Rated Lifting Capacities In Pounds Fully Extended Outriggers. See Set Up Note 2.



Load Radius (Ft.)	2° Offset		20° Offset		40° Offset	
	$\Delta^\circ$	Load	$\Delta^\circ$	Load	$\Delta^\circ$	Load
20	77.0	11,300				
25	74.0	11,000				
30	71.0	9,400	75.5	6,800		
35	68.0	8,400	72.5	6,400	77.0	4,900
40	64.5	7,300	69.5	5,900	73.5	4,700
45	61.0	6,100	66.0	5,600	70.0	4,500
50	57.5	5,000	62.5	5,300	66.5	4,400
55	53.5	4,100	58.5	4,500	62.5	4,300
60	49.5	3,400	54.5	3,700	58.0	4,000
65	45.5	2,800	50.0	3,100	53.5	3,300
70	40.5	2,400	45.5	2,600	48.5	2,700
75	35.5	2,000	40.0	2,100	42.5	2,200
80	29.5	1,600	34.0	1,700		
85	22.0	1,300	26.0	1,400		
90	9.5	1,100				
Min. Bm. Ang./Cap.	0	400	0	400	0	500

Rated Lifting Capacities In Pounds Fully Extended Outriggers. See Set Up Note 2.



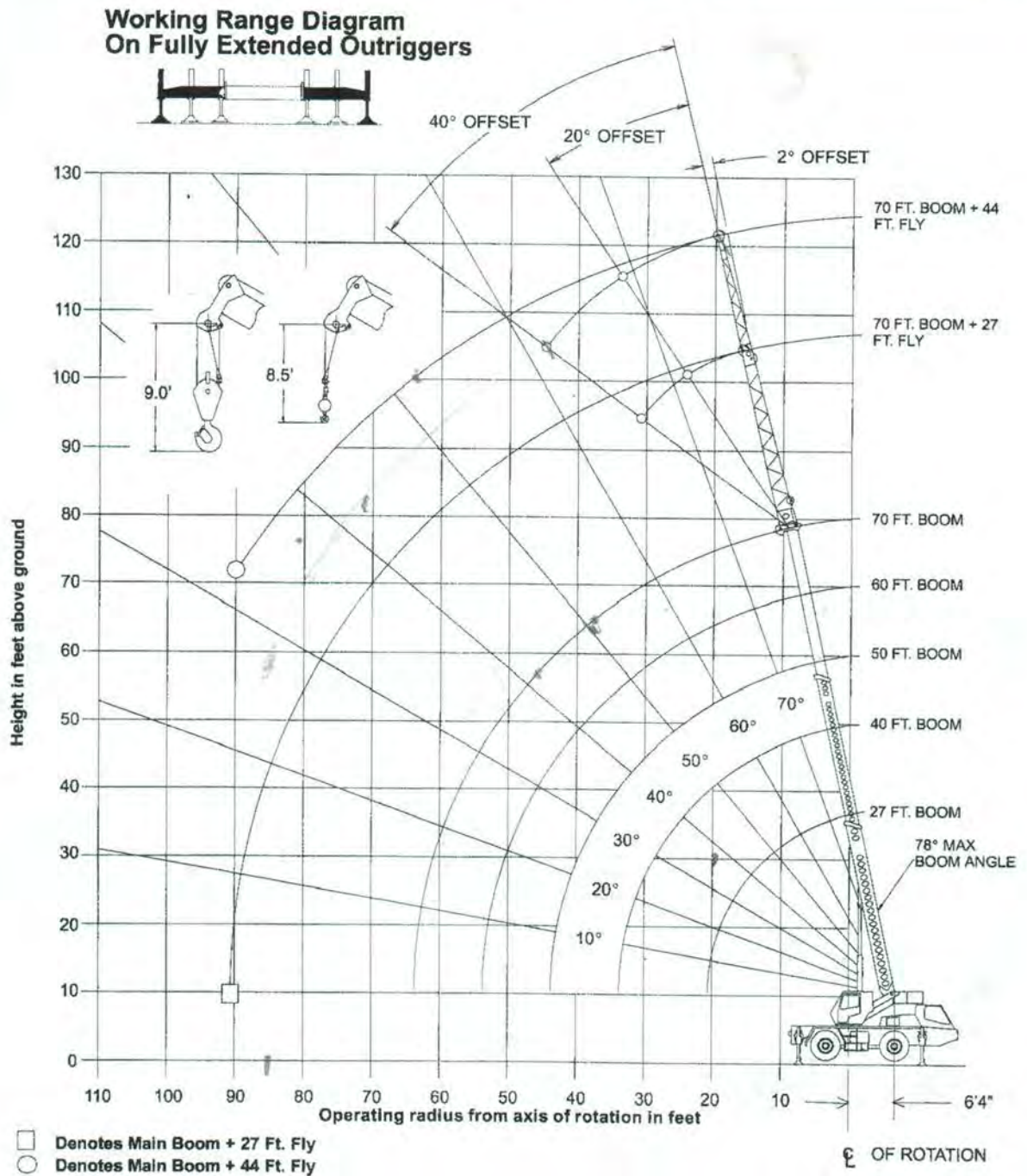
Load Radius (Ft.)	2° Offset		20° Offset		40° Offset	
	$\Delta^\circ$	Load	$\Delta^\circ$	Load	$\Delta^\circ$	Load
25	77.0	6,700				
30	74.5	6,100				
35	72.0	5,500				
40	69.5	5,000	76.0	3,600		
45	67.0	4,600	73.5	3,400		
50	64.0	4,200	70.5	3,200	77.0	2,500
55	61.0	3,900	67.5	3,000	73.5	2,400
60	58.0	3,600	64.5	2,800	70.5	2,300
65	55.0	3,100	61.5	2,600	67.5	2,200
70	51.5	2,600	58.5	2,500	64.0	2,100
75	48.0	2,200	55.0	2,400	60.0	2,100
80	44.5	1,800	51.0	2,100	56.0	2,000
85	40.5	1,500	47.0	1,800	51.5	1,900
90	36.0	1,200	42.5	1,400	46.5	1,600
95			37.0	1,200	40.0	1,200

**WARNING**

Do Not Lower 44 Ft. Offset Fly In Working Position Below 32.5° Main Boom Angle Unless Main Boom Length Is 62 Ft. Or Less, Since Loss Of Stability Will Occur Causing A Tipping Condition.



## WORKING RANGE DIAGRAM



**Note:** Boom and fly geometry shown are for unloaded condition and crane standing level on firm supporting surface. Boom deflection, subsequent radius, and boom angle change must be accounted for when applying load to hook.

### **WARNING**

Do Not Lower The Boom Below The Minimum Boom Angle For No Load As Shown In The Above Chart For The Boom Lengths Shown. Loss Of Stability Will Occur Causing A Tipping Condition.