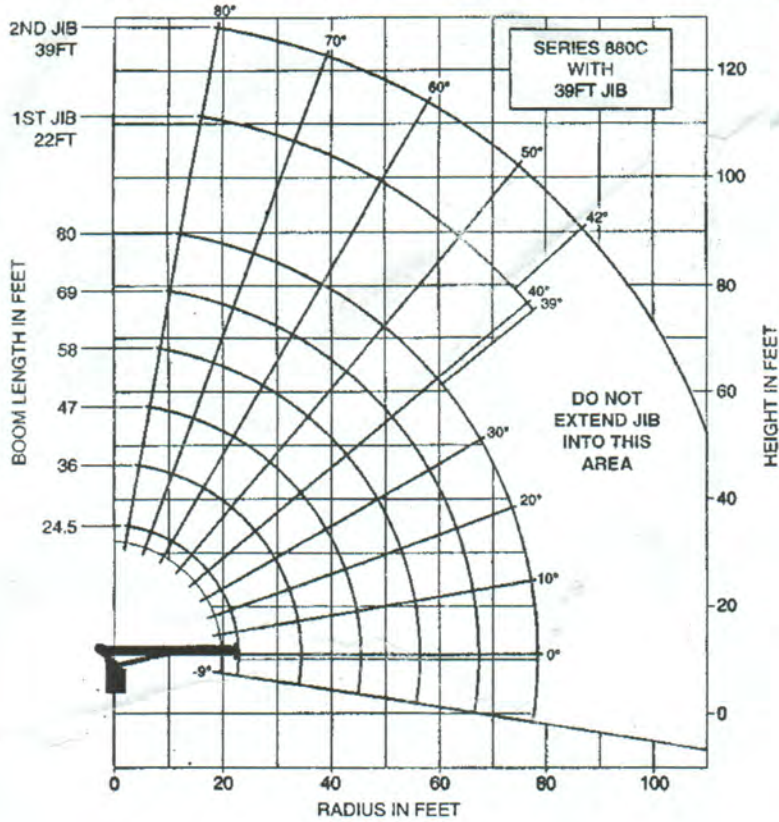


Taylor Excavating Co, Inc. – National 880C Boom Truck Chart

876845

NATIONAL CRANE CORPORATION



NOTE:

1. Operate with jib by radius when main boom is fully extended. If necessary increase boom angle to maintain loaded radius.
2. Operate with jib by boom angle when main boom is not fully extended. Do not exceed rated jib capacities at any reduced boom lengths.

LOADLINE EQUIPMENT DEDUCT (lb)

Downhaul weight	150
One sheave block	200
Two sheave block	355
Three sheave block	530

LOAD RADIUS (FEET)	LOADED BOOM ANGLE	24.5FT BOOM (lb)	LOADED BOOM ANGLE	36FT BOOM (lb)	LOADED BOOM ANGLE	47FT BOOM (lb)	LOADED BOOM ANGLE	58FT BOOM (lb)	LOADED BOOM ANGLE	69FT BOOM (lb)	LOADED BOOM ANGLE	80FT BOOM (lb)	LOAD RADIUS (FEET)	LOADED BOOM ANGLE	22FT JIB (lb)	LOADED BOOM ANGLE	39FT JIB (lb)
5	77.5	42,000											20	79	5,600		
8	70	29,200											25	76.5	4,900	79	3,350
10	64.5	24,200	73.5	22,200	78	20,600							30	73.5	4,300	76.5	3,000
12	58.5	20,900	70	19,000	75.5	17,500	78.5	16,200					35	70.5	3,650	74.5	2,650
14	52.5	18,200	66.5	16,600	73	15,300	76.5	14,100	79.5	13,200			40	67.5	3,100	72	2,400
16	46	15,900	63	14,700	70	13,500	74.5	12,500	77.5	11,700	79.5	11,300	45	64	2,600	69	2,200
20	29	12,200	55	11,900	64.5	11,000	70	10,100	74	9,600	76.5	9,100	50	61	2,200	67	2,000
25			44	9,500	57.5	8,900	65	8,200	69.5	7,600	72.5	7,200	55	58	1,900	64	1,800
30			31	7,400	50	7,300	59	6,700	65	6,300	68.5	5,950	60	54.5	1,600	61.5	1,600
35					41	6,100	53	5,700	60	5,400	64.5	5,000	65	51	1,350	59	1,400
40					30	4,900	46.5	4,800	55	4,600	60.5	4,300	70	47	1,100	55	1,200
45							38.5	4,100	49.5	4,000	56.5	3,750	75	43.5	850	52.5	1,000
50							29	3,300	43.5	3,400	52	3,250	80	39	650	49.5	850
55							13	2,200	37	2,900	47	2,800	85			46	700
60									29	2,400	41.5	2,400	90			42	550
65									17	1,700	35.5	2,000					
70											28	1,600					
75											18	1,100					

1 PART LINE	2 PART LINE	3 PART LINE	4 PART LINE	5 PART LINE	6 PART LINE
MAX. PULL 7,700 lb	MAX. PULL 15,400 lb	MAX. PULL 23,100 lb	MAX. PULL 30,800 lb	MAX. PULL 38,500 lb	MAX. PULL 42,000 lb

NOTICE

- Do not deadhead line block against boom tip when extending boom.
- Keep at least 3 wraps of loadline on drum at all times.
- Use only 9/16" diameter rotation resistant cable with 38,500 lb breaking strength on this machine.
- Maximum capacity with "burst of speed" is 3,000 lb.